



YOUR EVENT

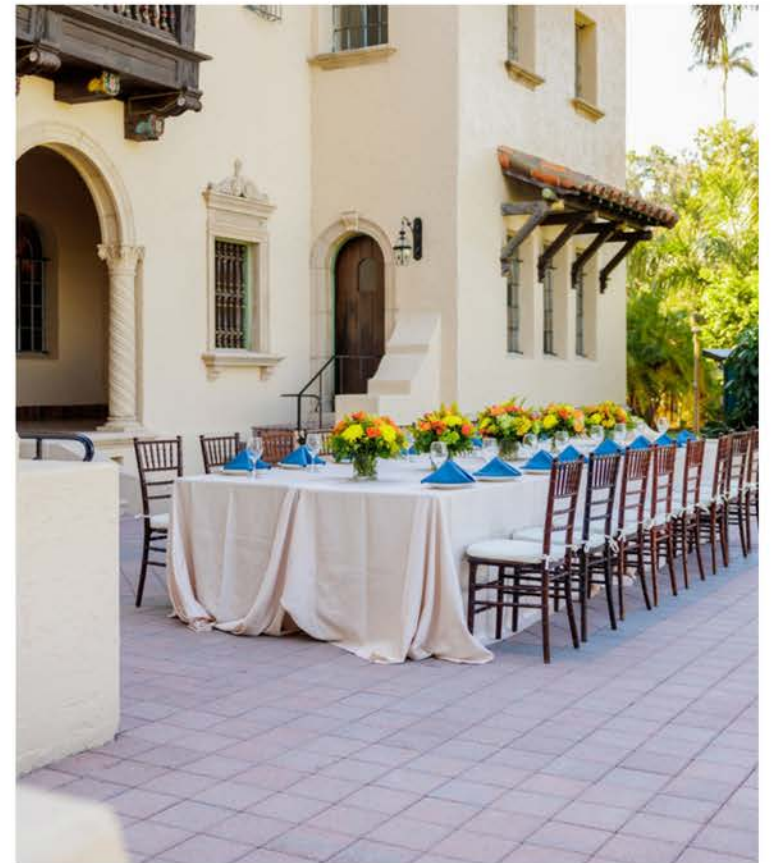
at the

CROSLEY

Imagine your event amid the grandeur of a bygone era. You and your guests will walk in the footsteps of the titans of America's Roaring 20s, as your event creates a history all its own.



Conveniently located between Bradenton and Sarasota, this historic estate was built in 1929 and served as the winter home of Powel Crosley, the American innovator who is most revered for bringing radio to the masses through the manufacturing of inexpensive radios during radio's first defining decade.



Here, every view offers stunning scenes, creating picturesque memories of a lifetime. Whether your guest list is 20 or 1,000 you'll find the Crosley easily adapts to become the perfect setting. Indoors, outdoors, from business meetings to gala receptions, we can accommodate them all.

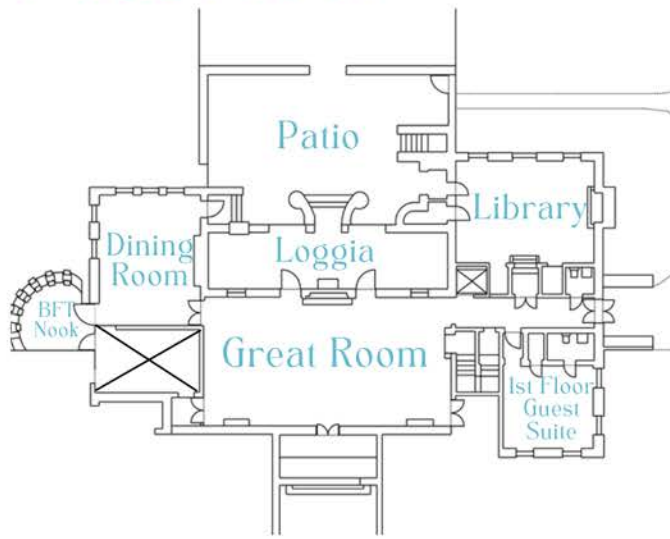


Come discover the area's most impressive venue and all you need for the most perfect event possible.

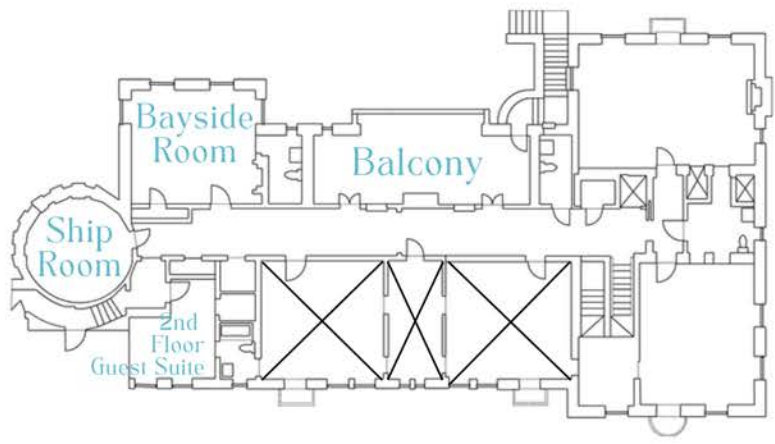


RENTAL & RATES INFORMATION

First Floor



Second Floor



Crosley Estate Event Rental

Prices vary by the day of the week | Exclusive rental window between 12pm - 11pm | Crosley Estate Event Rental and Event Rental plus Lawn include all public areas on the 1st & 2nd floors, six restrooms, patio, & pavilion; public areas are the rooms noted in the diagrams above | Available 18 or less months prior to requested date

\$4500 - Monday - Wednesday | \$5500 - Thursday | \$7000 - Fridays & Sundays* | \$7500 - Saturday

*Sundays before holidays charged at Saturday rate

Crosley Estate Business Meeting Rental - Exclusive

\$2000 | Available Monday through Friday only; based upon availability | 8 hours rental window between 7am - 11pm; limited additional hours available upon request and availability | Access to full first floor, Gwendolyn's and Powel's rooms, all restrooms, Balcony, Patio and Pavilion | Tables and Chairs with one set and strike included; facility owned equipment is limited and any additional needs must be rented through exclusive caterer or rental company | Available 4 or less months prior to requested date

Bayfront Lawn

\$1000 | Access to set-up on the lawn can be added to the Crosley Estate Event Rental and the Crosley Estate Business Meeting Rental - Exclusive

Prices listed above are not tax inclusive. All prices are subject to change without notice.



ADDITIONAL RENTAL TYPES & RATES

Crosley Estate Business Meeting Rental - Non-Exclusive

\$750 | Available Monday through Friday only; based upon availability | 8 hours rental window between 7am - 11pm; limited additional hours available upon request and availability | Access to one room only - Gwendolyn's or Powel's on the second floor | Tables and Chairs with one set and strike included | Available 2 or less months prior to requested date

New Year's Eve Rental Package

\$10500 | New Year's Eve rental package includes Crosley Estate Event Rental plus Lawn (see above for details) from 1pm - 2am | Includes the holiday surcharge and a 1-hour rehearsal (non-holiday)

Photo Shoot Rental

\$200/hour | Personal photos only - headshots, team/group, graduation, etc. | 1-hour minimum and 4-hours maximum between 7am - 11pm | Can only be scheduled within 30 days of the requested event date

Additional Event Rental Hours

\$250/hour | Additional hours outside of the standard, rented time frames | available upon request and based on availability

Prices listed above are not tax inclusive. All prices are subject to change without notice.

YOUR EVENT *at the* CROSLEY

From Board Meeting ...

Let us set you up for success! Our business meeting rental includes table and chair set-up.



YOUR EVENT *at the* CROSLY

to the Ballroom . . .

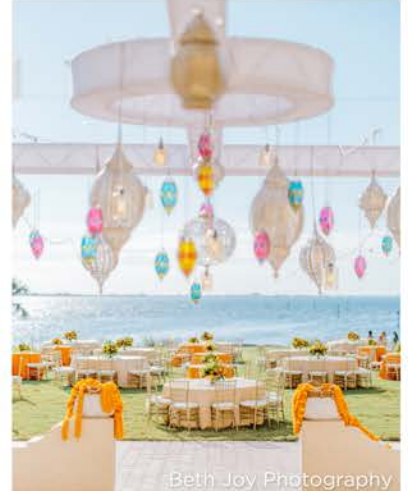
The Crosley Estate interior offers an intimate dining or cocktail area with grand vintage design.



YOUR EVENT *at the* CROSLY

And to the Bay

The Bay Side Lawn at the Powel Crosley Estate overlooks the shimmering waters of Sarasota Bay with spectacular sunset views & romantic starlight dining. Our Bay Side Pavilion is a beautiful covered outdoor option for cocktail hour or an intimate dinner.





CROSLEY ESTATE

Exclusive Catering List

Mattison's Catering

941-921-3400

mattisons_sales@mattisons.com

Pier 22 Catering

941-748-8087

kim@pier22.com

Michael's On East

941-366-0007

Phil.Mancini@bestfood.com

Puff 'n Stuff

813-382-5901

lauren@puffnstuff.com

Milan Catering & Event Design

941-312-0000

mroxana@milancatering.com

Simply Gourmet by Metz

941-218-3671

bsouflis@metzcorp.com



Powel
Crosley Estate

FREQUENTLY ASKED QUESTIONS

Below is a list of our frequently asked questions to help you prepare for your event. If you have any additional questions, please contact our sales office.

SALES OFFICE The Crosley Estate Sales Office is at the Bradenton Area Convention Center, One Haben Blvd, Palmetto, Florida 34221, sales@bacvb.com, 941-722-3244, ext. 3987; front desk extension 0 and is open Monday-Friday, 8am-5pm.

How do I tour the Powel Crosley Estate? Visit www.PowelCrosleyEstate.com and click the "Schedule a Site Visit" button to schedule a site visit.

Are prices negotiable? No. They are preset.

When are deposits due? If your event is more than 6 months away, one third (1/3) of the rent is due with the signed agreement and the balance is due six months prior to the event. If your event is within 6 months, half the rent is due with the agreement and the other half is due one month later. Total of known charges is due ten days prior to the event taking place.

What forms of payment do you accept? Through our on-line payment portal, we accept all major credit cards. Checks are not accepted less than 21 days prior to the event.

Is the Crosley Estate ADA compliant? Yes. We have a small elevator that goes to all floors as well as several ramps for scooters, wheelchairs, etc. We highly recommend guests with mobility issues always use the lifts and not the stairs.

What is the capacity of the outdoor space at the Crosley Estate? The Bayside Lawn can host upwards of 800 people for a banquet. Large parties need additional advanced planning. The pavilion seats 80+ people for a ceremony and 50-60 for a seated dinner.

What is the sales tax? Manatee County Sales Tax is 7% although the rental tax is slightly lower.

Are tables and chairs available? We provide 20-60" round tables, 12-8' tables, and 4-6' tables at no cost. Your caterer is responsible for set up and tear down if used.

What caterer can I use? Our venue offers our clients the opportunity to choose from six caterers. The caterers have been selected through an extensive evaluation process to provide our customers with quality catering options. Self-catering or requesting caterers that are not on our approved list is prohibited. The Powel Crosley Estate does collect at 12% - 20% commission fee from the caterers to offset our expenses related to food and beverage services. The caterers have the option of absorbing the fee within their per person cost to the customer or adding it as a separate line item on a customer's invoice.

What rental items are required to be handled by the caterer? Tents, lighting, linens, tables, chairs, furniture, and dance floors are required to be handled by the caterer. The only rental exceptions are listed below.

What rental items are not required to be handled by the caterer? Transportation (limos, carriages, etc), flowers, formal wear or clothing, cakes, all entertainment, photographer/videographer and wedding planners.

FREQUENTLY ASKED QUESTIONS

Can I bring in my old family linens or some of my own decorations? That is between you and the caterer. Often home-made or heirloom decorations are used.

Do you provide wedding planners? The Crosley Estate does not provide wedding planners and does not maintain a list of local wedding planners.

Can I bring in my boat or arrive by boat? Yes. The Powel Crosley Estate offers a large, deep water boat basin for docking and can provide you with the Nautical Navigation instructions.

Can I have live music or a DJ? Basic power is available for bands, string quartets, DJ's, etc. However, you will need to communicate specific power needs with your facility representative. You must also follow specific decibel guidelines per county ordinances. All amplified music should be moved indoors at 11pm.

Can I hang lanterns, chandeliers from the trees? Yes, speak with your caterer.

What kinds of flowers are allowed at the Powel Crosley Estate? Anything other than live red or dark colored rose petals is permitted for use at the facility. Rose petals leave behind stains and can damage the historic facility. Silk flowers should only be used in a controlled environment (no petals).

That tree is in my way. Can it be removed? No, we do not change landscaping.

What can we use for the wedding reception toss? Birdseed, Biodegradable items, and rice are not permitted as they are hard to clean up and can be unsafe for guests to walk on. Alternatives could be bubbles or larger, easier items to clean up like mini beach balls, glow sticks, or streamers that are attached to a base. Dried herbs kept in little bags can also be used; noise-based items such as tambourines, maracas, or bells can be used. Crosley Estate staff clean-up will result in additional charges.

Why can't I have Sky Lanterns or drones? The facility is in the flight pattern of the Sarasota Bradenton International Airport. Regulations do not allow anything to be released in the air including birds, balloons and especially sky lanterns. The FAA prohibits drones with our proximity to the airport.

Can I have professional fireworks brought in? Yes, professional fireworks can be set off from a floating barge off property using a licensed pyrotechnic company. You must alert your Facility Representative.

Are candles allowed? All candles must be in a container and the top of the flame must be 2 inches below the top of the container. Unity candles are permitted during the ceremony only.

Are sparklers allowed? Sparklers are not allowed at the Crosley.

Can I leave my car overnight? Plan ahead with designated drivers. Cars are occasionally left overnight, however the property is not open every day and may not be open the following day for pickup. You may want to consider hiring a car service in advance to assist your guests.

When can we rehearse? Non-exclusive use rehearsals are confirmed 60 days prior to your event by your event manager. We will do our best to work in a time that works for you and your guests around other activities going on at the venue. There may be other guests on the property during your rehearsal.